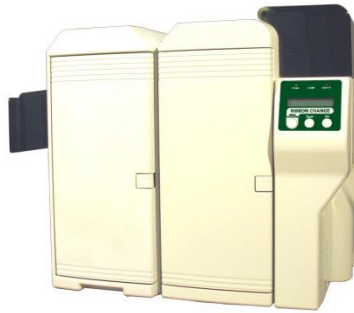


# Main Board Replacement Installation Manual



*TeamNiSCA*

4/2011

Rev 2

HEAT ROLLER MAIN BOARD REPLACEMENT

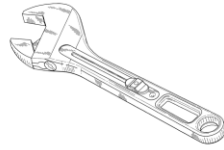
*NiSCA PR-5302 Laminator*



*World Class  
Identification Card Printers*

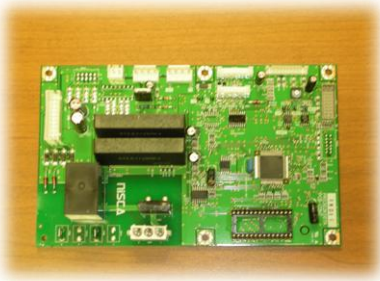
## Getting Started

The conversion will require a Phillips screw driver.



## Contents Required

PR5302 Main Board



PR5302K003

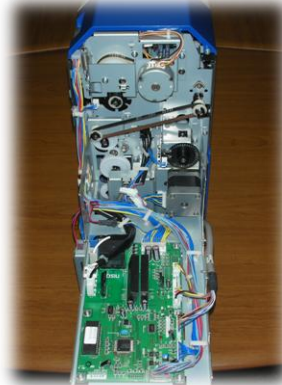
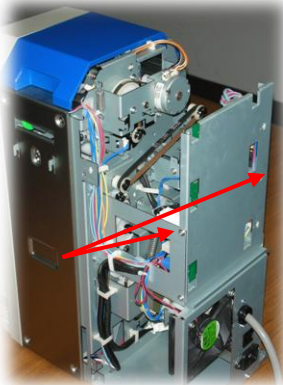
# Main Board Replacement Instructions

**Caution!!! Always turn off the printer and unplug the laminator's power cord. Also make sure the laminator has had time to cooled down before starting any repairs.**

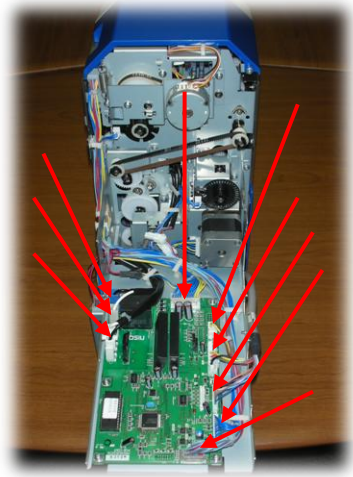
Take off the back cover by removing the 6 screws in the locations shown.



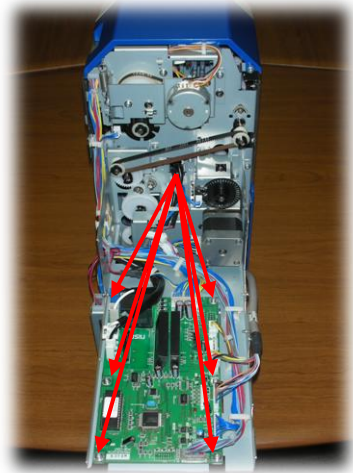
Remove the 2 screws which hold the main board bracket in a vertical position and pull the bracket down to access the main board.



Disconnect all cables (8 cables, 9 connectors) plugged into the main board.



Next, remove the 6 screws holding the main board in place and remove the board.



Install the replacement main board in the reverse order in which the defective board was removed.

Information in this document is subject to change without notice and does not represent a commitment on the part of Nisca. This document may not be copied unless authorized with a written consent by Nisca. The users of this product accept the hardware and software solution provided is the intellectual property of Nisca and agrees from herein not to reproduce or copy for any purpose including for resell or manufacturing. Other trademarks and trade names used in this document belong to their respective holders. Nisca disclaim any proprietary interest in trademarks and trade name created other than its own.