

# Serial Contactless Smart Encoder Installation Manual



*TeamNiSCA*

4/2011

Rev 2

RS-232 MIFARE, DESFIRE

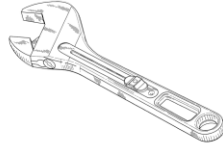
*NiSCA PR-C101 ID Card Printer*



*World Class  
Identification Card Printers*

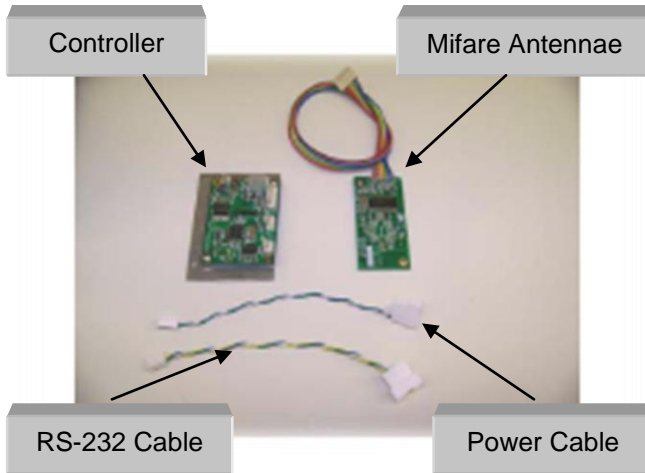
## Getting Started

Before you install the encoder, make sure the printer has been powered off. The installation will require a Phillips screw driver.



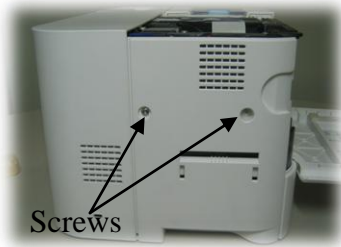
## Encoder Contents

Make sure the parts below are included and accounted for.

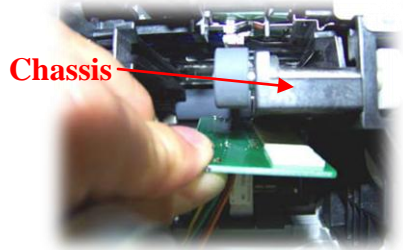


## Installation Instructions

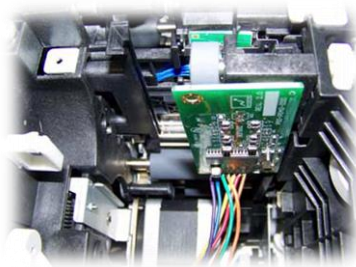
First, unplug the printer from the outlet. Then remove the 2 screws holding the rear cover in place to expose printers card path.



Attach the Mifare antenna as shown below with the I/F cable toward inside the printer. Make sure the edge of the PCBA is flush (even)\* with the edge of the printer chassis.

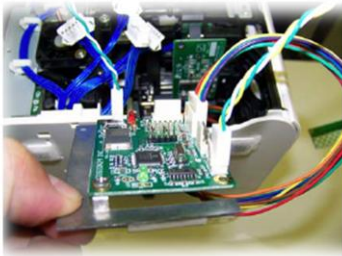
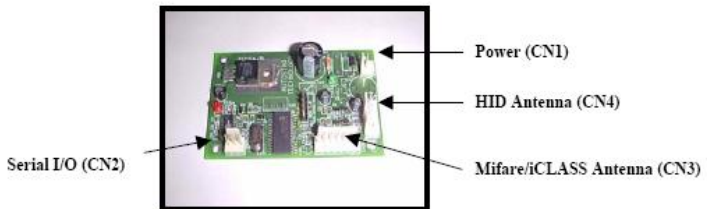


Note: Clean the mounting surface with alcohol before applying.



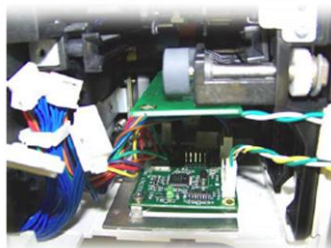
Next, connect the cables provided (serial CN2, Mifare CN3, Power CN1) as shown.

### Controller Connector Positioning

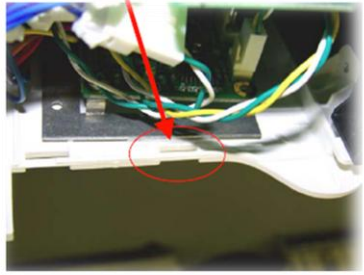


Note: Clean the plastic surface before attaching controller bracket to the base of the printer.

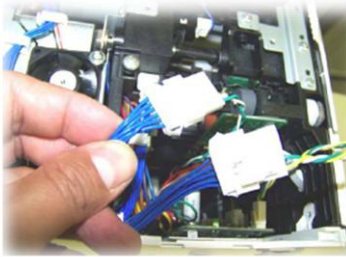
Attach controller to the bottom housing of the printer.



Make sure the front edge of the bracket is behind the rear cover insert slot.



Attach cables to DB9 and Power connectors as shown below. Make sure to secure cables with tie wrap provided and cable harness.



Flash the printer with Mifare card positioning firmware (PR-C101Rf\_KG-Mifare.npr) using the download utility in the properties of the driver listed under the utility tab.

Make sure the latest driver version for the printer is v1.60 or higher and the printer's main firmware is version 2.70 or higher. You can check this in the options of the printer driver.

Route all loose wiring and secure to wire harness.

Plug in the printer and turn on power. The power indicator (Red LED) on the controller PCBA should light up & stay on and the status light (Green LED) should flash once. If this sequence does not occur or any of the LED's does not light up, unplug the printer and check to make sure all cables are properly seated. Reinstall rear cover.

Information in this document is subject to change without notice and does not represent a commitment on the part of Nisca. This document may not be copied unless authorized with a written consent by Nisca. The users of this product accept the hardware and software solution provided is the intellectual property of Nisca and agrees from herein not to reproduce or copy for any purpose including for resell or manufacturing. Other trademarks and trade names used in this document belong to their respective holders. Nisca disclaim any proprietary interest in trademarks and trade name created other than its own.



*World Class  
Identification Card Printers*